

**Measure #155 (NQF: 0101): Falls: Plan of Care – National Quality Strategy Domain: Communication and Care Coordination**

**2017 OPTIONS FOR INDIVIDUAL MEASURES:**  
**CLAIMS ONLY**

**MEASURE TYPE:**  
Process

This is a two-part measure which is paired with Measure #154: Falls: Risk Assessment.

This measure should be reported if CPT II code 1100F "Patient screened for future falls risk; documentation of two or more falls in the past year or any fall with injury in the past year" is submitted for Measure #154.

**DESCRIPTION:**

Percentage of patients aged 65 years and older with a history of falls that had a plan of care for falls documented within 12 months

**INSTRUCTIONS:**

This measure is to be reported a minimum of **once per performance period** for patients seen during the performance period. There is no diagnosis associated with this measure. This measure is appropriate for use in all non-acute settings (excludes emergency departments and acute care hospitals). This measure may be reported by eligible clinicians who perform the quality actions described in the measure based on the services provided and the measure-specific denominator coding.

**Measure Reporting:**

The listed denominator criteria is used to identify the intended patient population. The numerator quality-data codes included in this specification are used to submit the quality actions allowed by the measure. All measure-specific coding should be reported on the claim(s) representing the eligible encounter.

**DENOMINATOR:**

All patients aged 65 years and older with a history of falls (history of falls is defined as 2 or more falls in the past year or any fall with injury in the past year). Documentation of patient reported history of falls is sufficient

**Denominator Criteria (Eligible Cases):**

Patients aged  $\geq 65$  years on date of encounter

**AND**

All eligible instances when **CPT II code 1100F** (Patient screened for future fall risk; documentation of two or more falls in the past year or any fall with injury in the past year) is reported in the numerator for Measure#154

**AND**

**Patient encounter during the performance period (CPT or HCPCS):** 92540, 92541, 92542, 92548, 97161, 97162, 97163, 97164, 97165, 97166, 97167, 97168, 99201, 99202, 99203, 99204, 99205, 99211, 99212, 99213, 99214, 99215, 99304, 99305, 99306, 99307, 99308, 99309, 99310, 99324, 99325, 99326, 99327, 99328, 99334, 99335, 99336, 99337, 99341, 99342, 99343, 99344, 99345, 99347, 99348, 99349, 99350, G0402, G0438, G0439

**NUMERATOR:**

Patients with a plan of care for falls documented within 12 months

**Numerator Instructions:** All components do not need to be completed during one patient visit, but should be documented in the medical record as having been performed within the past 12 months.

**Definitions:**

**Plan of Care** – Must include: 1) consideration of vitamin D supplementation AND 2) balance, strength, and gait training

**Consideration of Vitamin D Supplementation** – Documentation that vitamin D supplementation was advised or considered or documentation that patient was referred to his/her physician for vitamin D supplementation advice

**Balance, Strength, and Gait Training** – Medical record must include: documentation that balance, strength, and gait training/instructions were provided OR referral to an exercise program, which includes at least one of the three components: balance, strength or gait OR referral to physical therapy

**Fall** – A sudden, unintentional change in position causing an individual to land at a lower level, on an object, the floor, or the ground, other than as a consequence of sudden onset of paralysis, epileptic seizure, or overwhelming external force

**Numerator Quality-Data Coding Options:**

**Patient receiving Hospice Services, Patient Not Eligible:**

**Denominator Exclusion: G9720:** Hospice services for patient occurred any time during the measurement period

**OR**

**Plan of Care Documented**

**Performance Met: CPT II 0518F:** Falls plan of care documented

**OR**

**Risk Assessment for Falls not Completed for Medical Reasons**

**Denominator Exception: 0518F with 1P** Patient not ambulatory, bed ridden, immobile, confined to chair, wheelchair bound, dependent on helper pushing wheelchair, independent in wheelchair or minimal help in wheelchair

**OR**

**Plan of Care not Documented, Reason not Otherwise Specified**

Append a reporting modifier (8P) to CPT Category II code 0518F to report circumstances when the action described in the numerator is not performed and the reason is not otherwise specified.

**Performance Not Met: 0518F with 8P:** Plan of care not documented, reason not otherwise specified

**RATIONALE:**

Interventions to prevent future falls should be documented for the patient with 2 or more falls or injurious falls.

**CLINICAL RECOMMENDATION STATEMENTS:**

The USPSTF recommends exercise or physical therapy and vitamin D supplementation to prevent falls in community-dwelling adults aged 65 years or older who are at increased risk for falls.

Grade: B Recommendation.

The AGS 2010 Clinical Practice Guidelines Recommend:

Multifactorial/Multicomponent Interventions to Address Identified Risk(s) and Prevent Falls

1. A strategy to reduce the risk of falls should include multifactorial assessment of known fall risk factors and management of the risk factors identified.[A]
2. The components most commonly included in efficacious interventions were:
  - a. Adaptation or modification of home environment [A]
  - b. Withdrawal or minimization of psychoactive medications [B]
  - c. Withdrawal or minimization of other medications [C]
  - d. Management of postural hypotension [C]
  - e. Management of foot problems and footwear [C]
  - f. Exercise, particularly balance, strength, and gait training [A]

3. All older adults who are at risk of falling should be offered an exercise program incorporating balance, gait, and strength training. Flexibility and endurance training should also be offered, but not as sole components of the program. [A]
4. Multifactorial/multicomponent intervention should include an education component complementing and addressing issues specific to the intervention being provided, tailored to individual cognitive function and language. [C]
5. The health professional or team conducting the fall risk assessment should directly implement the interventions or should assure that the interventions are carried out by other qualified healthcare professionals. [A]

**COPYRIGHT:**

Physician Performance Measures (Measures) and related data specifications, developed by the American Medical Association (AMA)-convened Physician Consortium for Performance Improvement<sup>®</sup> (PCPI<sup>®</sup>) and the National Committee for Quality Assurance (NCQA) pursuant to government sponsorship under subcontract 6205-05-054 with Mathematica Policy Research, Inc. under contract 500-00-0033 with Centers for Medicare & Medicaid Services.

These performance Measures are not clinical guidelines and do not establish a standard of medical care, and have not been tested for all potential applications.

The Measures, while copyrighted, can be reproduced and distributed, without modification, for noncommercial purposes, eg, use by health care providers in connection with their practices. Commercial use is defined as the sale, license, or distribution of the Measures for commercial gain, or incorporation of the Measures into a product or service that is sold, licensed or distributed for commercial gain. Commercial uses of the Measures require a license agreement between the user and the AMA, (on behalf of the PCPI) or NCQA. Neither the AMA, NCQA, PCPI nor its members shall be responsible for any use of the Measures.

**THE MEASURES AND SPECIFICATIONS ARE PROVIDED “AS IS” WITHOUT WARRANTY OF ANY KIND.**

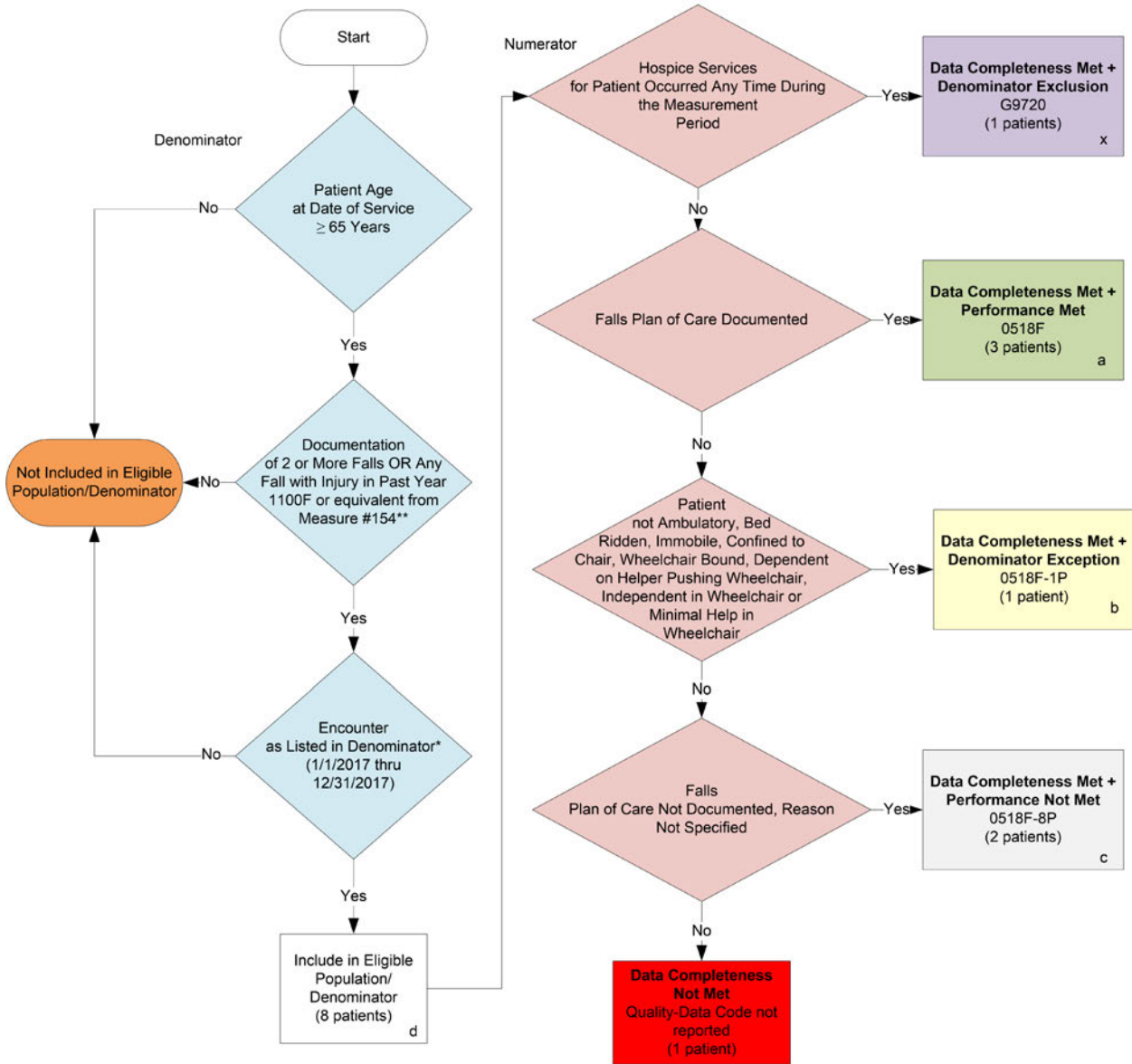
© 2004-2016 American Medical Association and National Committee for Quality Assurance. All Rights Reserved.

Limited proprietary coding is contained in the Measure specifications for convenience. Users of the proprietary code sets should obtain all necessary licenses from the owners of these code sets. The AMA, NCQA, the PCPI and its members disclaim all liability for use or accuracy of any Current Procedural Terminology (CPT<sup>®</sup>) or other coding contained in the specifications.

CPT<sup>®</sup> contained in the Measures specifications is copyright 2004-2016 American Medical Association. G codes and associated descriptions included in these Measure specifications are in the public domain.

LOINC<sup>®</sup> copyright 2004-2016 Regenstrief Institute, Inc. SNOMED CLINICAL TERMS (SNOMED CT<sup>®</sup>) copyright 2004-2016 International Health Terminology Standards Development Organization. All Rights Reserved. Use of SNOMED CT<sup>®</sup> is only authorized within the United States.

## 2017 Claims Individual Measure Flow #155 NQF #0101: Falls: Plan of Care



### SAMPLE CALCULATIONS:

**Data Completeness=**  
 Denominator Exclusion (x=1 patient) + Performance Met (a=3 patients) + Denominator Exception (b=1 patient) + Performance Not Met (c=2 patients) = 7 patients = 87.50%  
 Eligible Population / Denominator (d=8 patients) = 8 patients

**Performance Rate=**  
 Performance Met (a=3 patients) = 3 patients = 60%  
 Data Completeness Numerator (7 patients) - Denominator Exclusion (x=1 patient) - Denominator Exception (b=1 patient) = 5 patients

\* See the posted Measure Specification for specific coding and instructions to report this measure.  
 \*\* Reporting measure #154 is a precursor for reporting this measure. Patients where 1100F without modifier or equivalent (documentation of 2 or more falls or any fall with injury in past year) is reported in measure #154 are pulled into the denominator for measure #155.  
 NOTE: Report Frequency: Patient process

CPT only copyright 2016 American Medical Association. All rights reserved.  
 The measure diagrams were developed by CMS as a supplemental resource to be used in conjunction with the measure specifications. They should not be used alone or as a substitution for the measure specification.

v1

**2017 Claims Individual Measure Flow**  
**#155 NQF #0101: Falls: Plan of Care**

Please refer to the specific section of the Measure Specification to identify the denominator and numerator information for use in reporting this Individual Measure.

1. Start with Denominator
2. Check Patient Age:
  - a. If the Age is greater than or equal to 65 years of age on Date of Service and equals No during the measurement period, do not include in Eligible Patient Population. Stop Processing.
  - b. If the Age is greater than or equal to 65 years of age on Date of Service and equals Yes during the measurement period, proceed to check Documentation of Two or More Falls or Any Fall with Injury in the Past Year.
3. Check Documentation of Two or More Falls or Any Fall with Injury in the Past Year:
  - a. If Documentation of Two or More Falls or Any Fall with Injury in the Past Year equals No, do not include in Eligible Patient Population. Stop Processing.
  - b. If Documentation of Two or More Falls or Any Fall with Injury in the Past Year equals Yes, proceed to check Encounter Performed.
4. Check Encounter Performed:
  - a. If Encounter as Listed in the Denominator equals No, do not include in Eligible Patient Population. Stop Processing.
  - b. If Encounter as Listed in the Denominator equals Yes, include in the Eligible population.
5. Denominator Population:
  - a. Denominator population is all Eligible Patients in the denominator. Denominator is represented as Denominator in the Sample Calculation listed at the end of this document. Letter d equals 8 patients in the sample calculation.
6. Start Numerator
7. Check Hospice Services For Patient Occurred Any Time During the Measurement Period:
  - a. If Hospice Services For Patient Occurred Any Time During the Measurement Period equals Yes, include in Data Completeness Met and Denominator Exclusion.
  - b. Data Completeness Met and Denominator Exclusion letter is represented as Data Completeness and Performance Rate in the Sample Calculation listed at the end of this document. Letter x equals 0 patients in Sample Calculation.
  - c. If Hospice Services For Patient Occurred Any Time During the Measurement Period equals No, proceed to Falls Plan of Care Documented.
8. Check Falls Plan of Care Documented:
  - a. If Falls Plan of Care Documented equals Yes, include in Data Completeness Met and Performance Met.

- b. Data Completeness Met and Performance Met letter is represented as Data Completeness and Performance Rate in the Sample Calculation listed at the end of this document. Letter a equals 3 patients in Sample Calculation.
  - c. If Falls Plan of Care Documented equals No, proceed to Patient is not Ambulatory, Bed Ridden, Immobile, Confined to Chair, Wheelchair Bound, Dependent on Helper Pushing Wheelchair, Independent in Wheelchair or Minimal Help in Wheelchair.
9. Check Patient is not Ambulatory, Bed Ridden, Immobile, Confined to Chair, Wheelchair Bound, Dependent on Helper Pushing Wheelchair, Independent in Wheelchair or Minimal Help in Wheelchair:
- a. If Patient is not Ambulatory, Bed Ridden, Immobile, Confined to Chair, Wheelchair Bound, Dependent on Helper Pushing Wheelchair, Independent in Wheelchair or Minimal Help in Wheelchair equals Yes, include in Data Completeness Met and Denominator Exception.
  - b. Data Completeness Met and Denominator Exception letter is represented as Data Completeness and Performance Rate in the Sample Calculation listed at the end of this document. Letter b equals 1 patient in Sample Calculation.
  - c. If Patient is not Ambulatory, Bed Ridden, Immobile, Confined to Chair, Wheelchair Bound, Dependent on Helper Pushing Wheelchair, Independent in Wheelchair or Minimal Help in Wheelchair equals No, proceed to Falls Plan of Care Not Documented, Reason Not Specified.
10. Check Falls Plan of Care Not Documented, Reason Not Specified:
- a. If Falls Plan of Care Not Documented, Reason Not Specified equals Yes, include in the Data Completeness Met and Performance Not Met.
  - b. Data Completeness Met and Performance Not Met letter is represented as Data Completeness in the Sample Calculation listed at the end of this document. Letter c equals 2 patients in the Sample Calculation.
  - c. If Falls Risk Assessment Not Completed, Reason Not Specified equals No, proceed to Data Completeness Not Met.
11. Check Data Completeness Not Met:
- a. If Data Completeness Not Met equals No, Quality Data Code not reported. 1 patient has been subtracted from the Data Completeness numerator in the sample calculation.

**SAMPLE CALCULATIONS:**

**Data Completeness=**  

$$\frac{\text{Denominator Exclusion (x=1 patient)} + \text{Performance Met (a=3 patients)} + \text{Denominator Exception (b=1 patient)} + \text{Performance Not Met (c=2 patients)}}{\text{Eligible Population / Denominator (d=8 patients)}} = \frac{7 \text{ patients}}{8 \text{ patients}} = 87.50\%$$

**Performance Rate=**  

$$\frac{\text{Performance Met (a=3 patients)}}{\text{Data Completeness Numerator (7 patients) - Denominator Exclusion (x=1 patient) - Denominator Exception (b=1 patient)}} = \frac{3 \text{ patients}}{5 \text{ patients}} = 60\%$$